



Test Summary
Utilization Guidelines

ANION GAP REFERENCE RANGE
3.6-11.0 mEq/L
EFFECTIVE JULY 17, 2015

TEST UPDATE

Historically, the normal range for the anion gap has been 12 +/- 4 mEq/L. Studies have shown that, as new technology has been introduced, the normal range of the anion gap has been decreasing over the past several decades. With our switch to new chemistry analyzers and a study of a large number of wellness profiles, it was necessary to reevaluate the anion gap reference range, which will become effective July 17, 2015.

Verification of Reference Interval

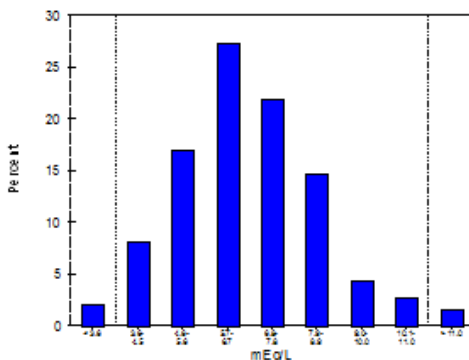
Analyst KCalvert
Specimen Criteria Wellness Samples Na-(CL+CO2)

Date 18 Jun 2015

Reference Interval	
Proposed	3.6 to 11 mEq/L
Results (Total/Excl)	480 / 0
Max/Obs outside	10.0% / 3.8%
Passes	Yes

Statistical Analysis	
Mean	6.70 mEq/L
SD	1.76
Median	6.60
Range	2.0 to 12.3
Central 95% Interval	3.6 to 10.9
Central 95% Index	12.0 / 469.0

Reference Interval Histogram



Results Distribution

Interval	Percent	Count
< 3.6	2.1	10
3.6-4.5	8.1	39
4.6-5.6	17.1	82
5.7-6.7	27.3	131
6.8-7.8	21.9	105
7.9-8.9	14.8	71
9.0-10.0	4.4	21
10.1-11.0	2.7	13
> 11.0	1.7	8